



*DE REMBRANDT- VEGHEL*



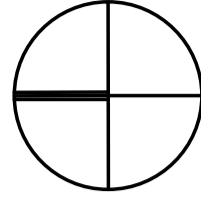
Situatie

Locatie aan Heuvelplein

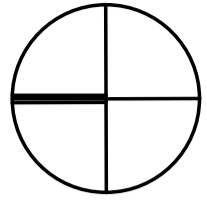
Kadastrale gemeente: Veghel

Percelen: 247, 1177, 1256.

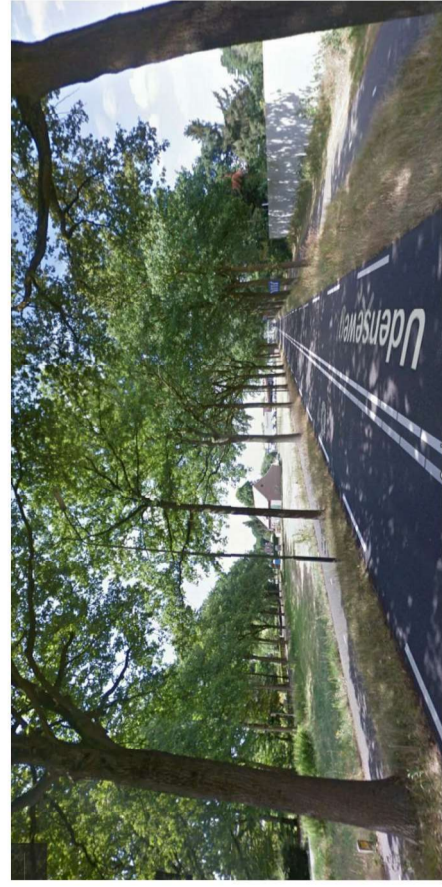
totale oppervlakte: ca. 15750 m<sup>2</sup>.







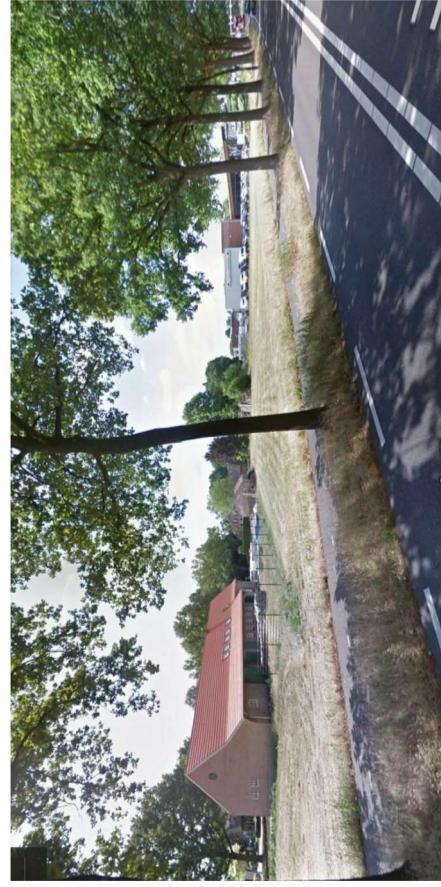
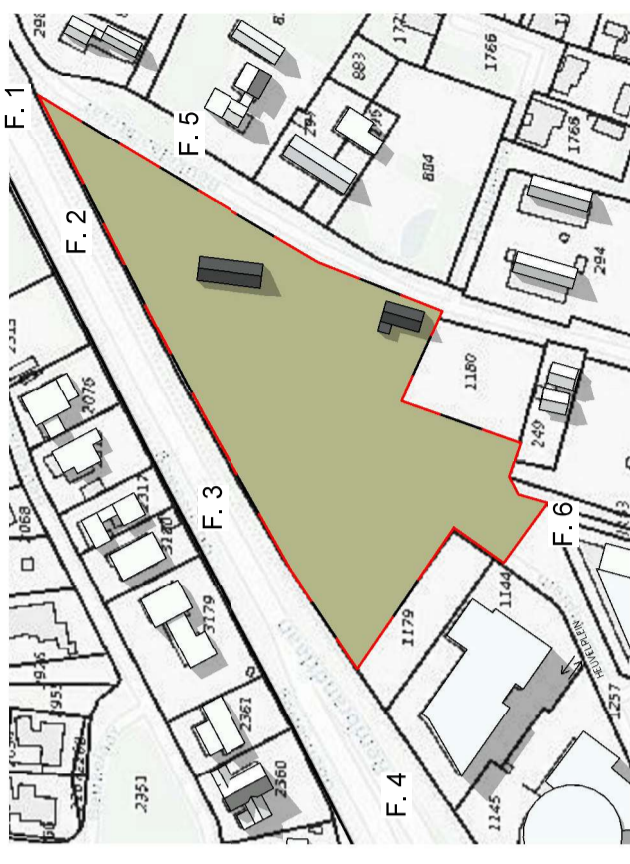




F.1



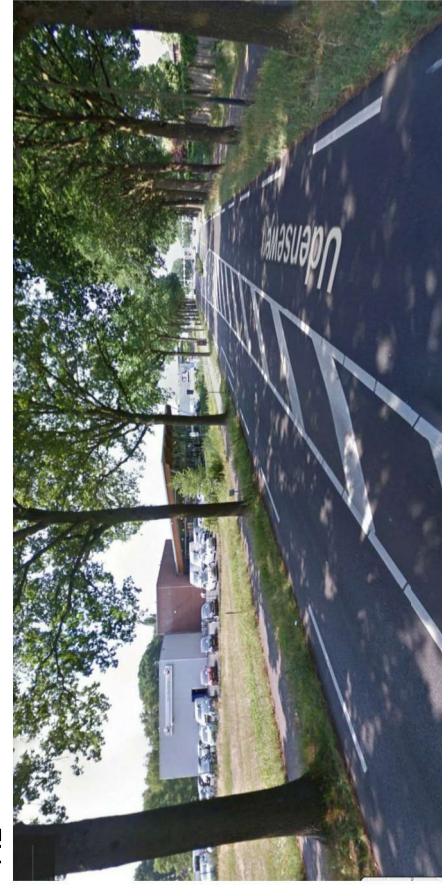
F.4



F.2



F.5

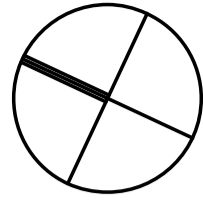
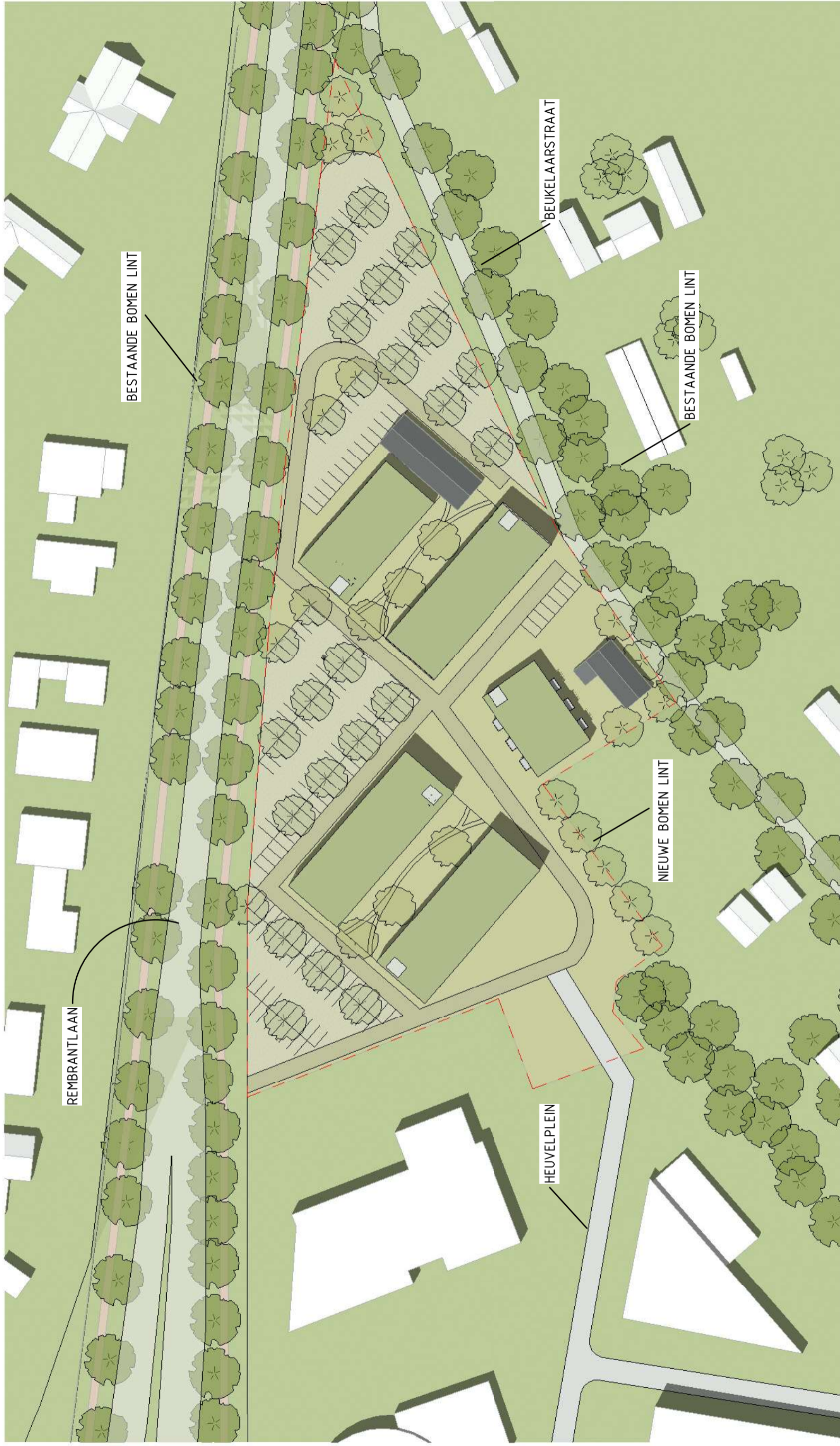


F.3

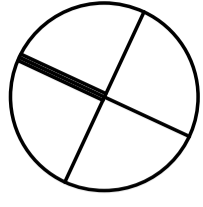
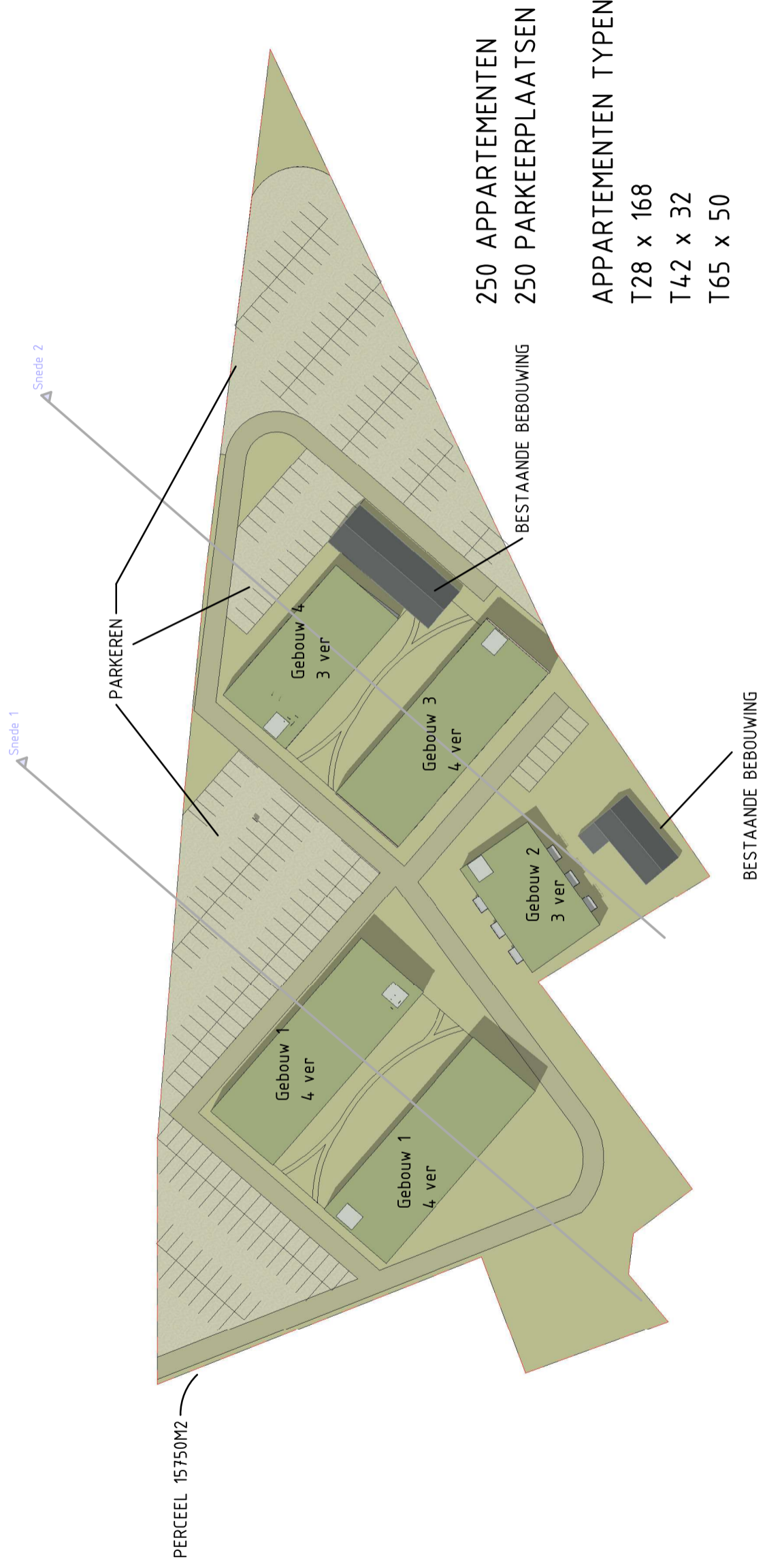


F.6

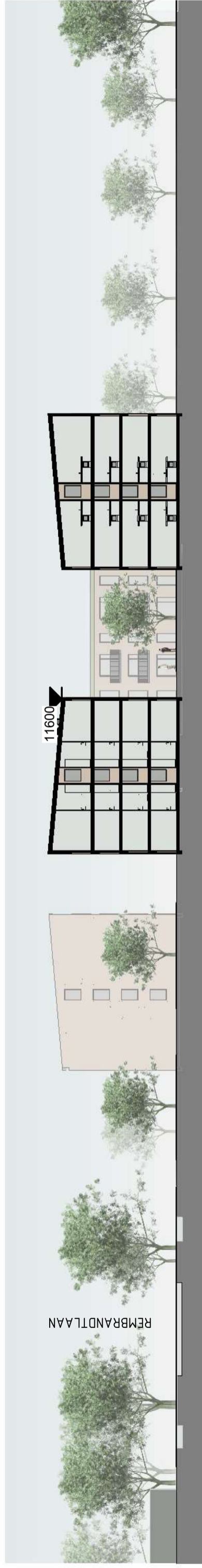
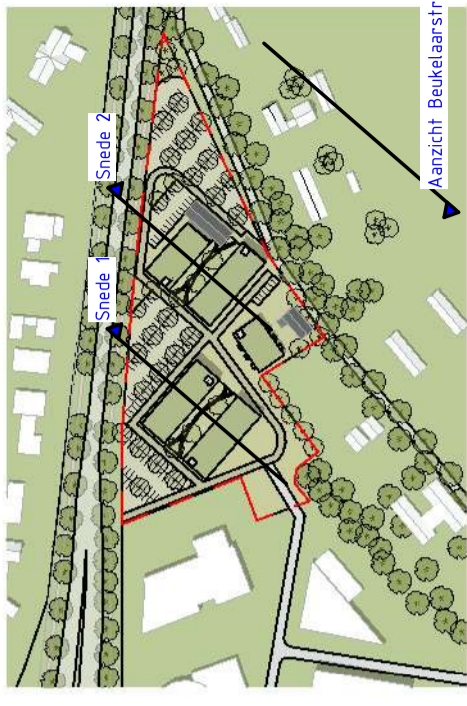




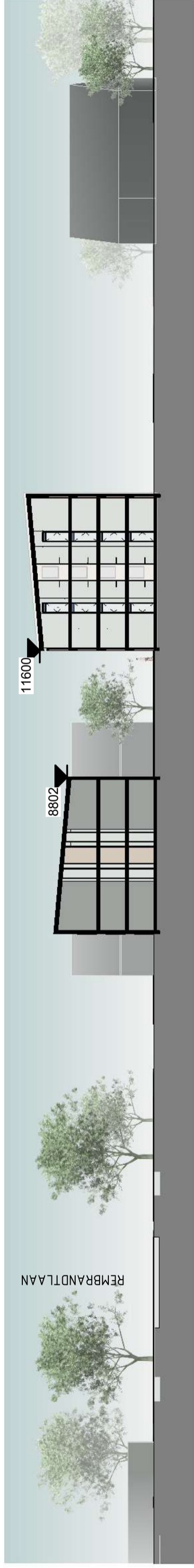




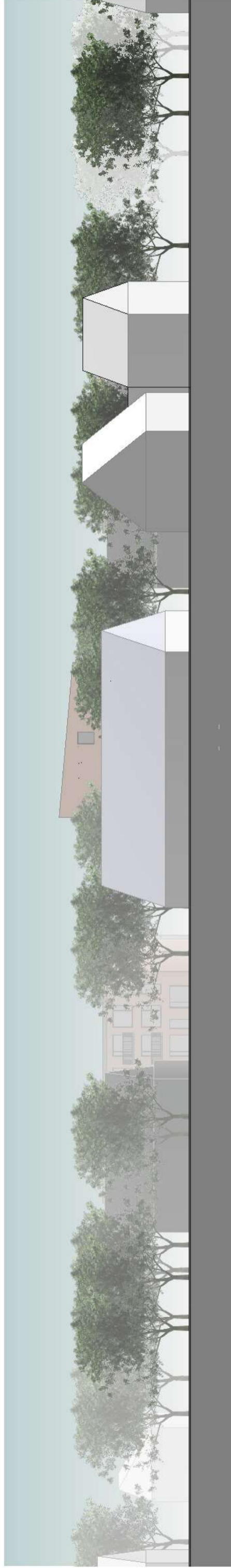




SNEDE 1



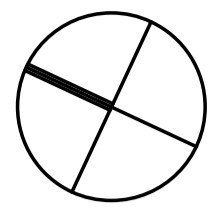
SNEDE 2



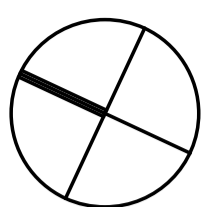
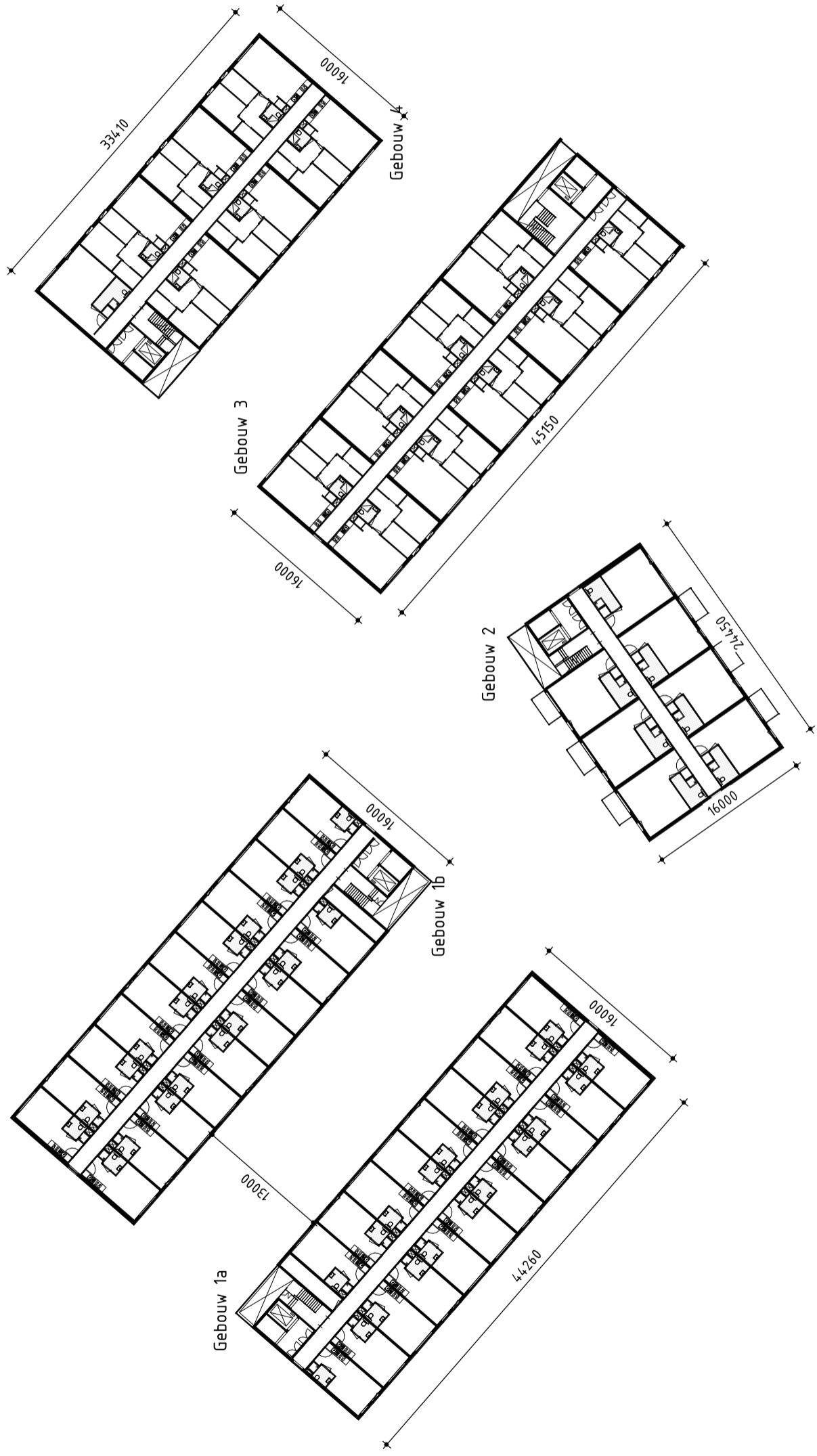




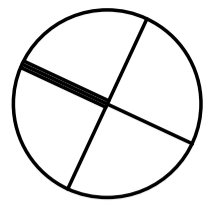
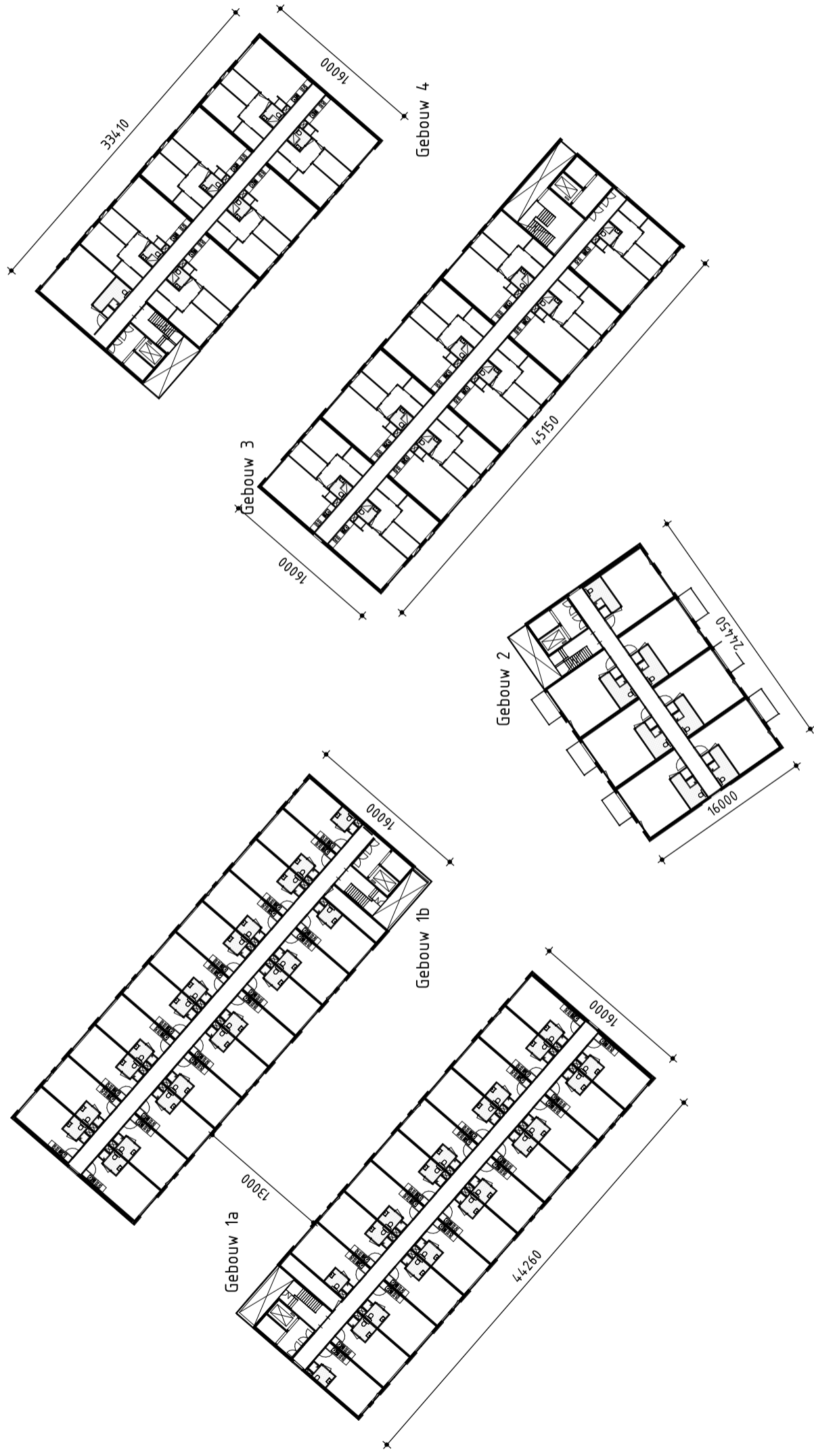
Gebouw 1a/b	Gebouw 2	Gebouw 3	Gebouw 4
Begane grond	Begane grond	Begane grond	Begane grond
1. Verdieping	1. Verdieping	1. Verdieping	1. Verdieping
2. Verdieping	2. Verdieping	2. Verdieping	2. Verdieping
3. Verdieping		3. Verdieping	
Totaal	Totaal	Totaal	Totaal
Appartement T28 = 20	Appartement T42 = 6	Appartement T65 = 9	Appartement T65 = 6
Appartement T28 = 20	Appartement T42 = 7	Appartement T65 = 8	Appartement T65 = 6
Appartement T28 = 20	Appartement T42 = 7	Appartement T42 = 1	Appartement T42 = 1
Appartement T28 = 20	Appartement = 21	Appartement T65 = 8	Appartement T65 = 6
Appartement = 80		Appartement T65 = 8	Appartement T42 = 1
		Appartement = 34	Appartement = 20



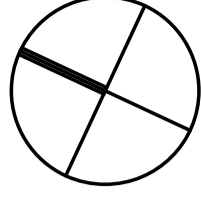




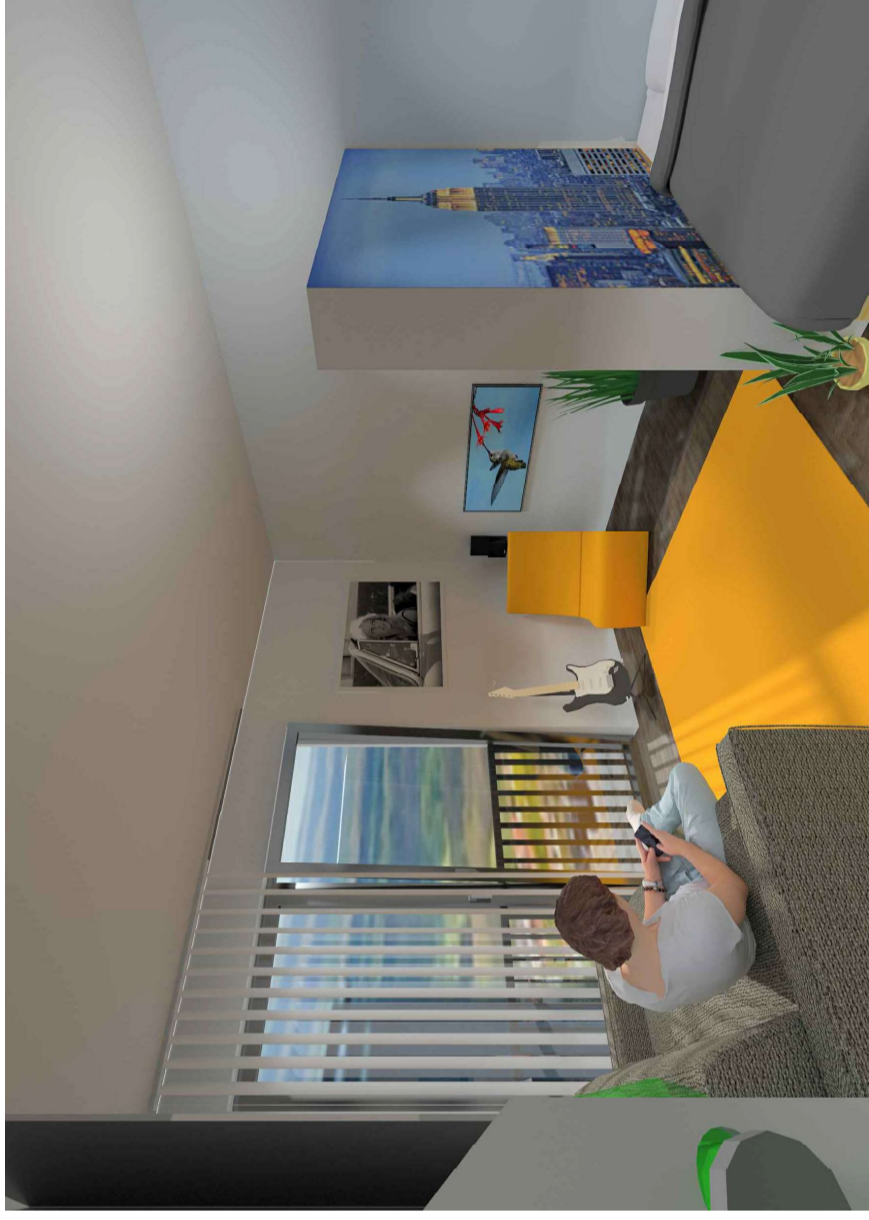
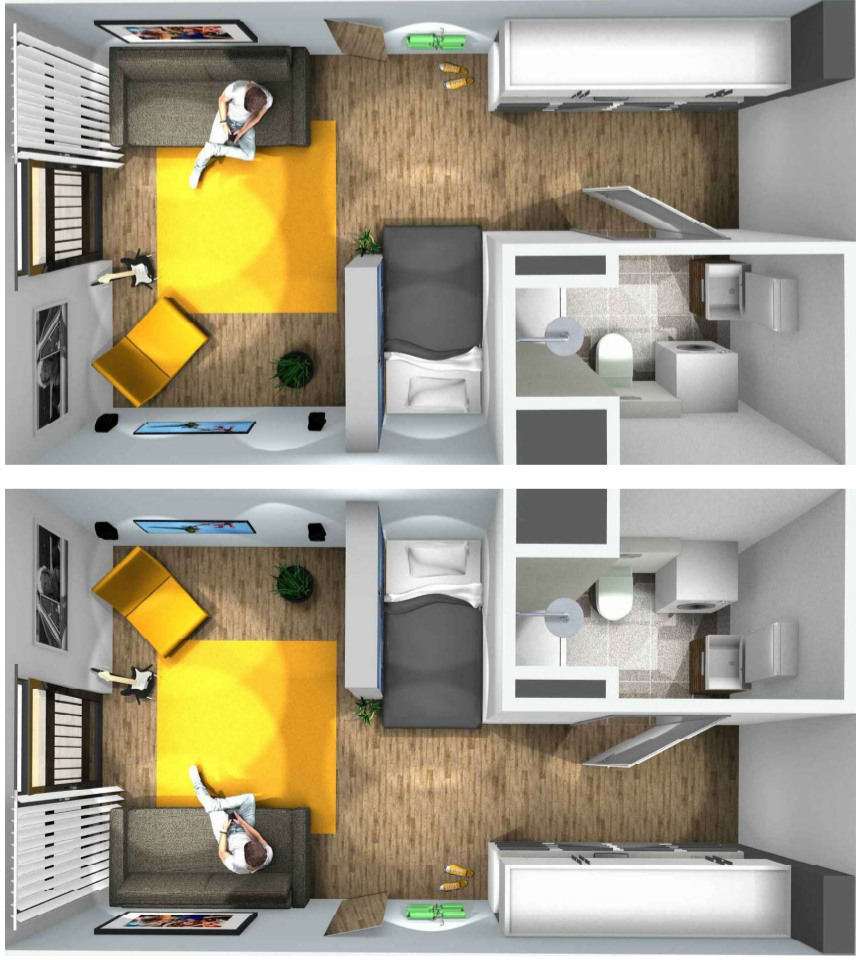
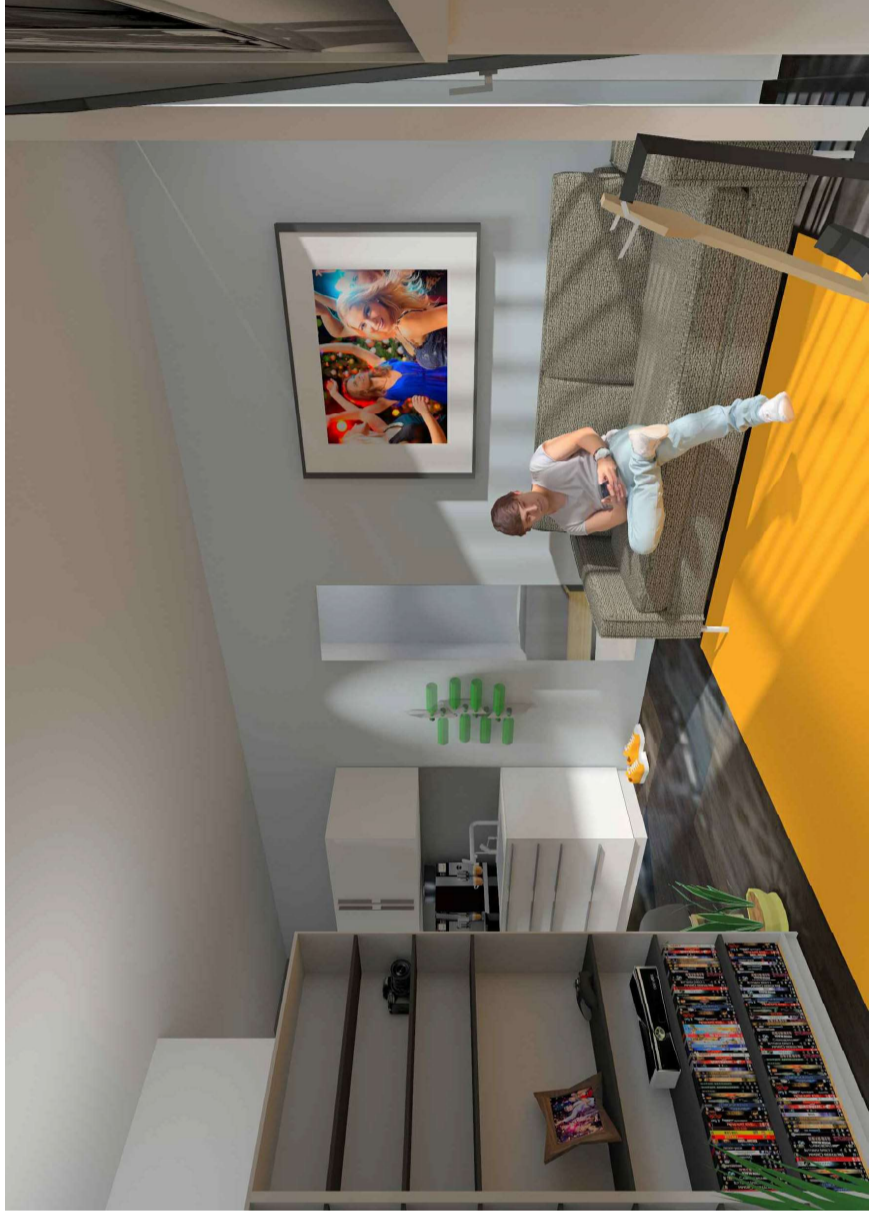
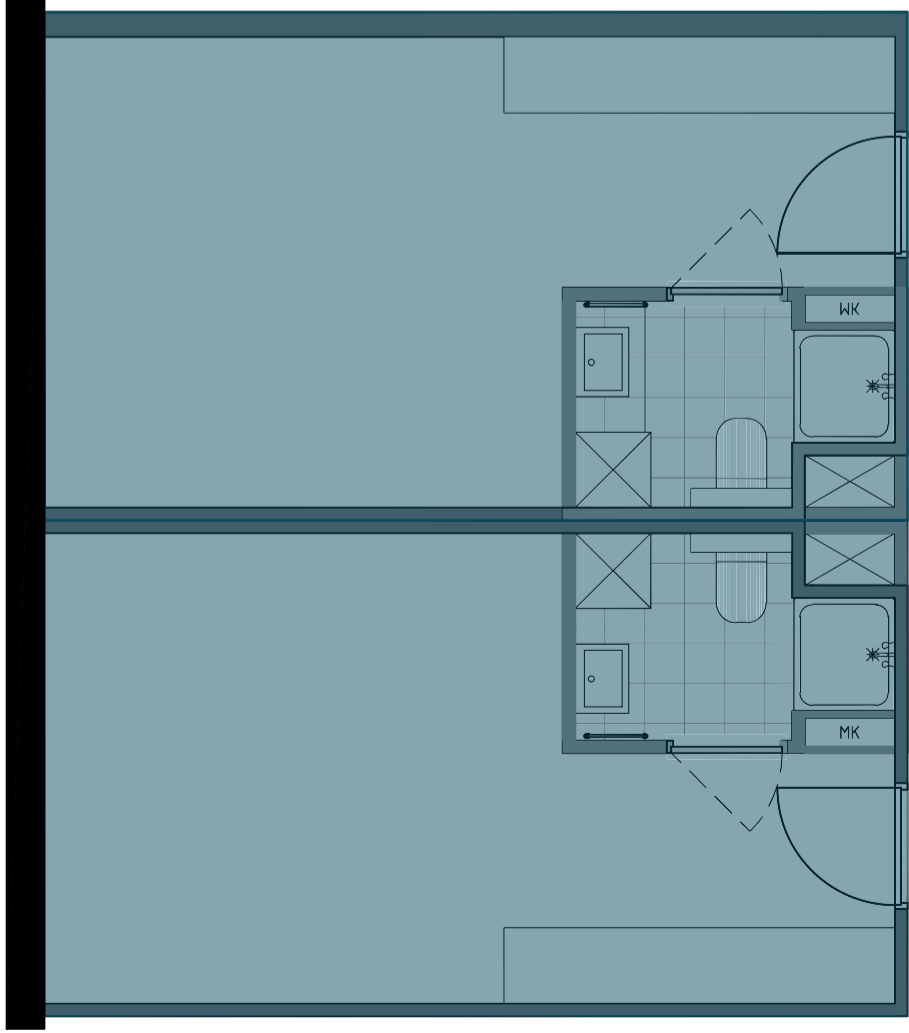








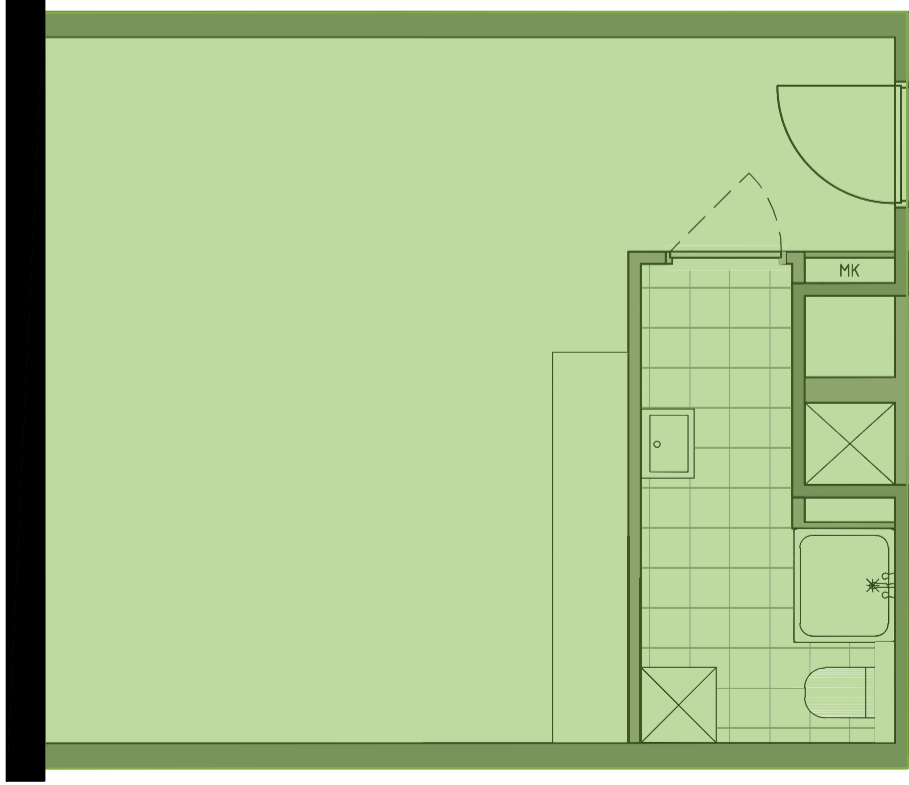




3D VISUAL





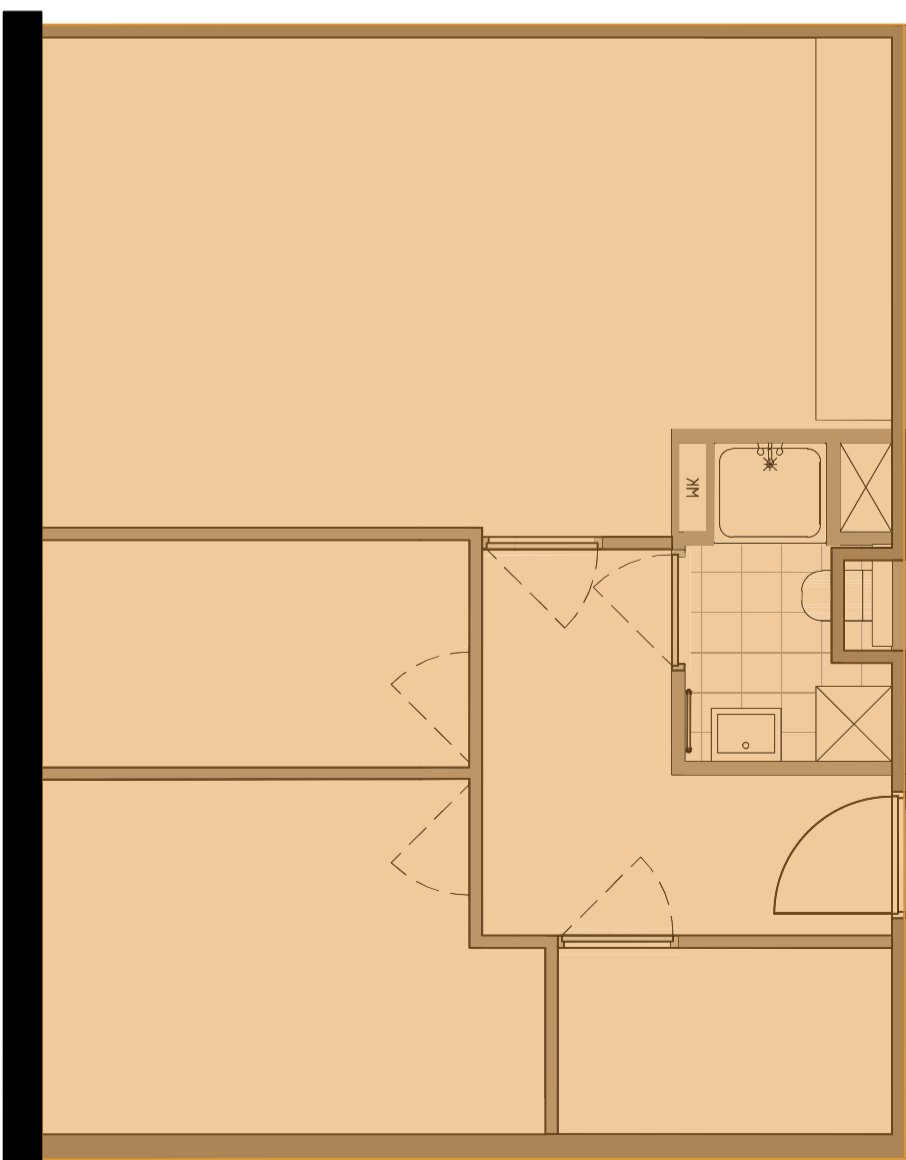


3D VISUAL

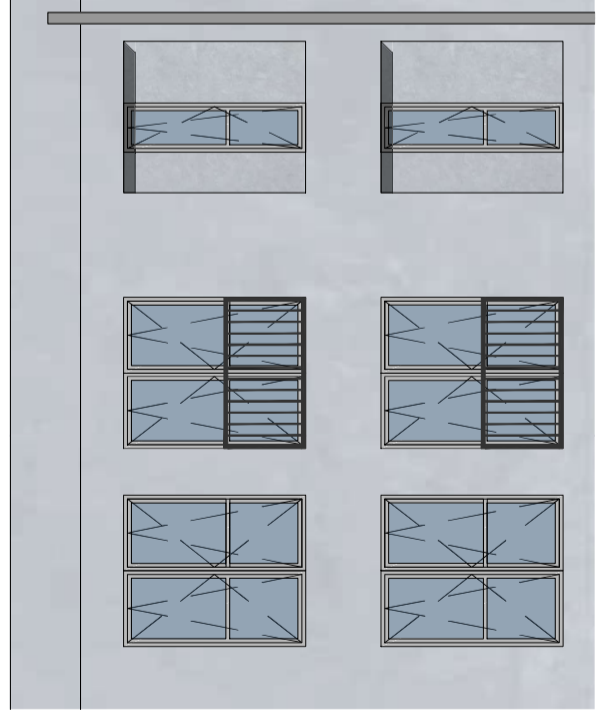
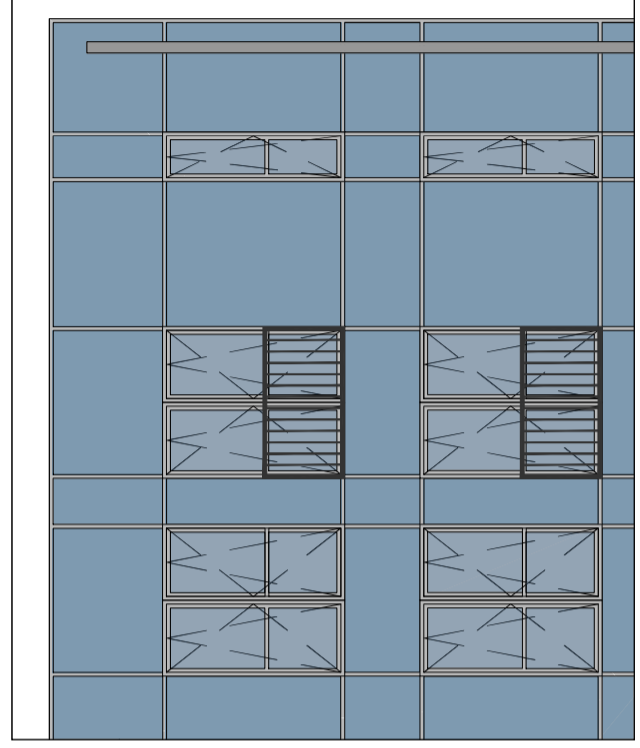
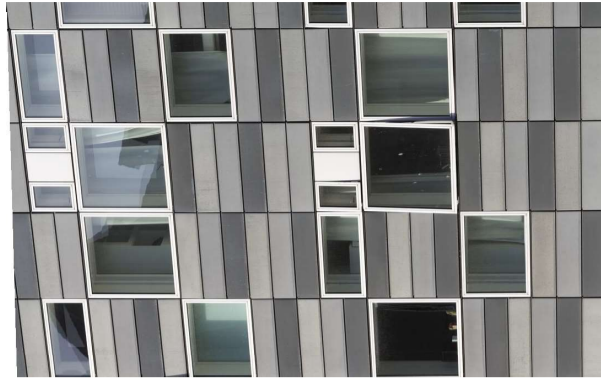
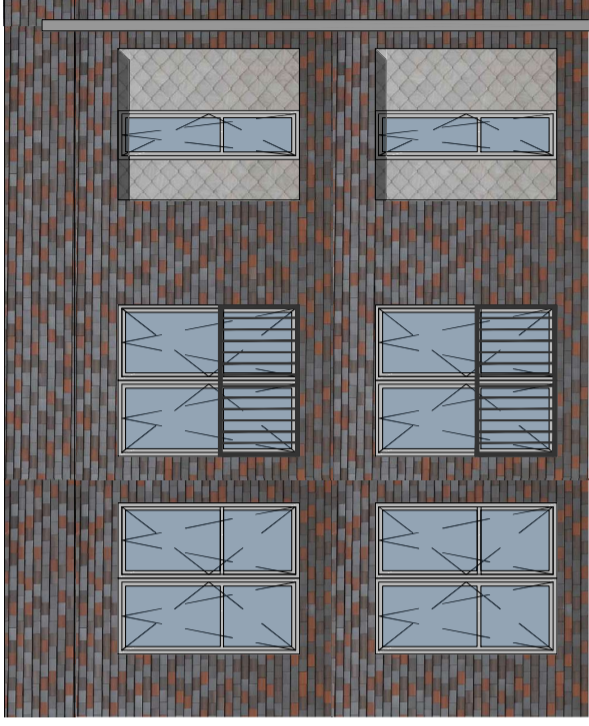




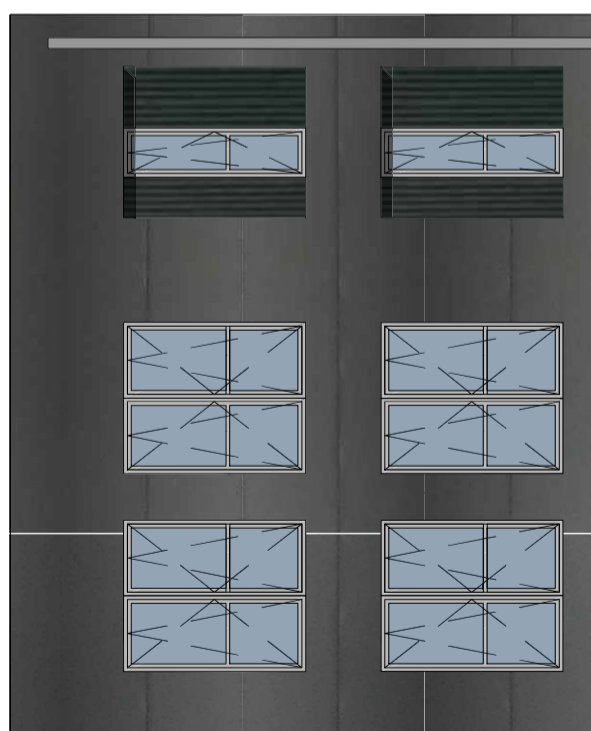
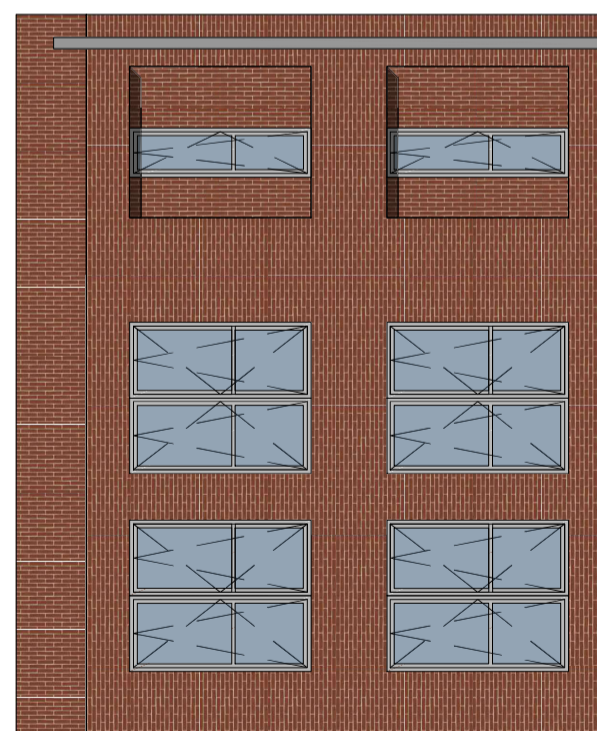
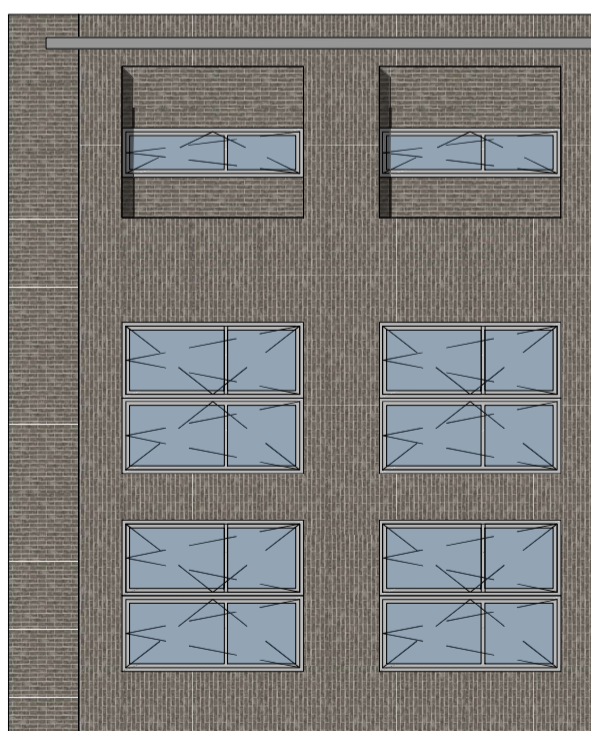
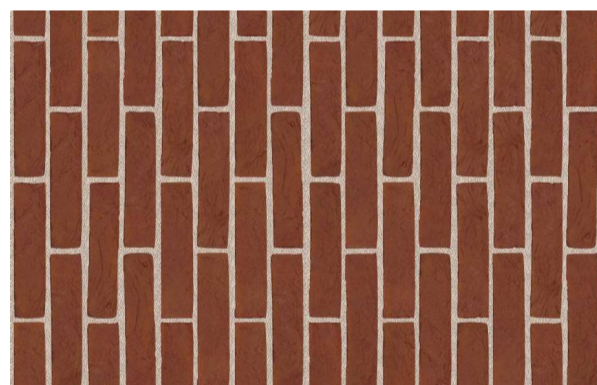
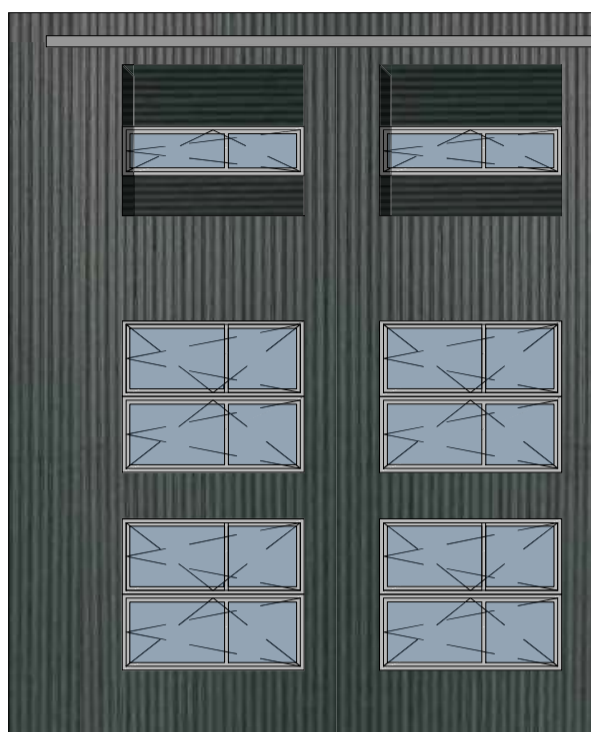
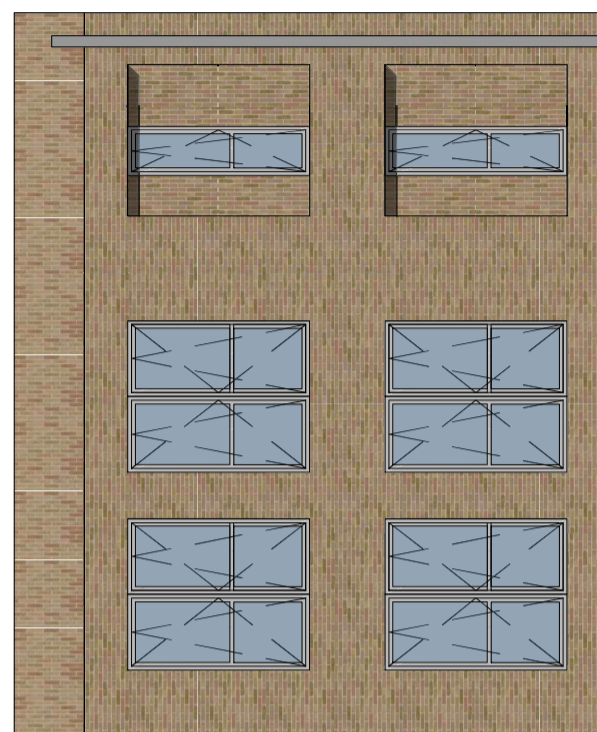
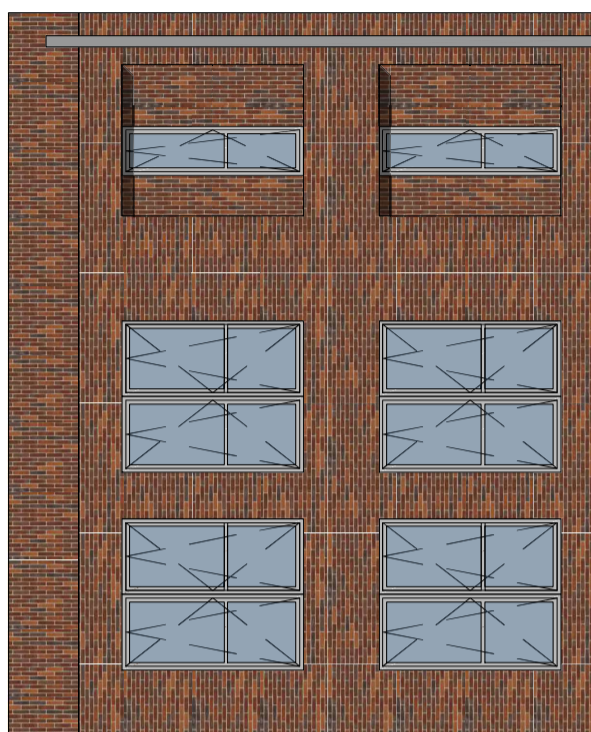
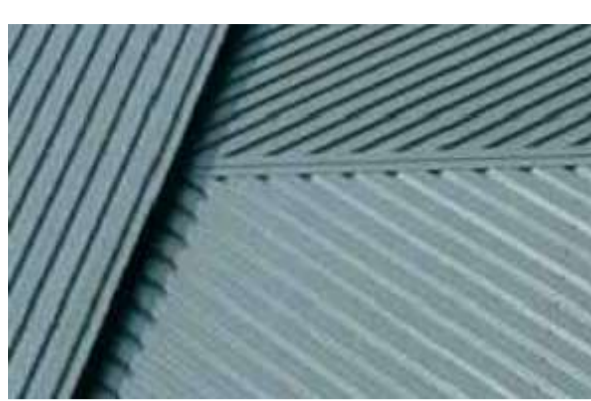
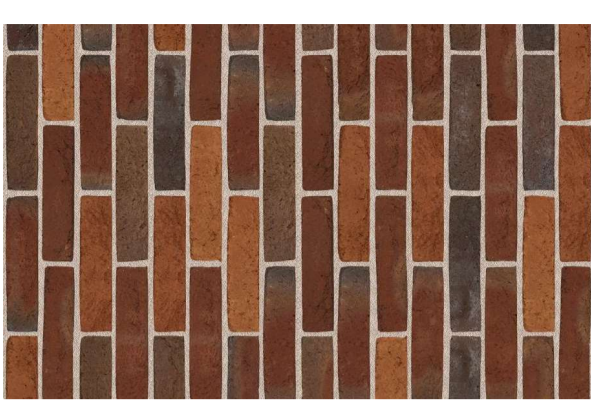
3D VISUAL



























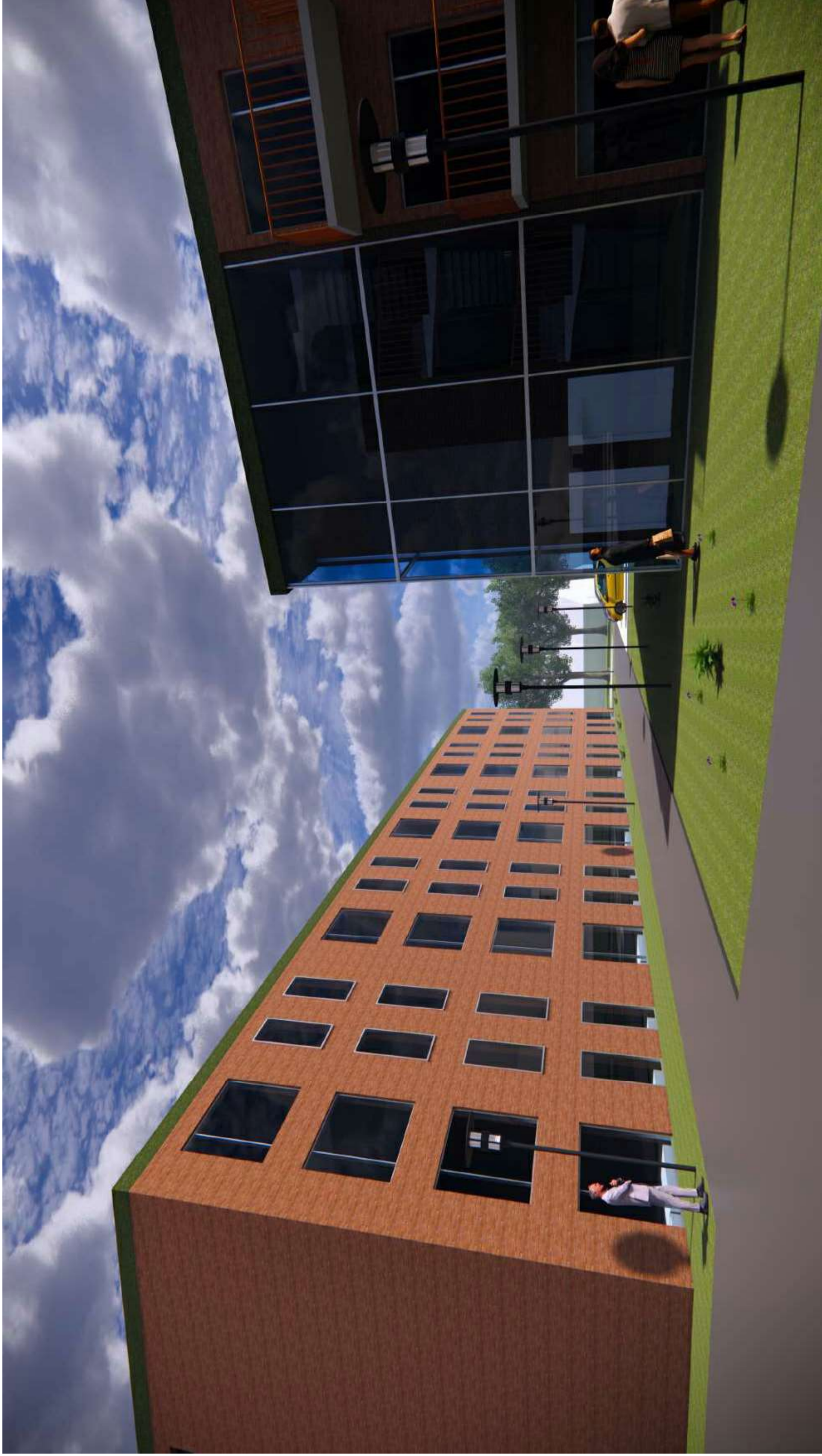














## Tilburg

Missiehuis Rooi Harten  
Bredaseweg 204-02  
5038 NK Tilburg  
Nederland

tel.: + 31 (0)13 5350989  
e-mail: [Tilburg@forumarchitecten.nl](mailto:Tilburg@forumarchitecten.nl)  
website: [www.forumarchitecten.nl](http://www.forumarchitecten.nl)

## Düsseldorf

Wenkerstraße 2a  
40470 Düsseldorf  
Deutschland

tel.: +49 211 68874993  
fax: +49 211 56663403  
e-mail: [duesseldorf@forumarchitekten.de](mailto:duesseldorf@forumarchitekten.de)

## Poznan

Wiedeńska 107  
60-683 Poznan  
Poland

tel.: +48 604 222 110  
e-mail: [poznan@forumarchitekci.pl](mailto:poznan@forumarchitekci.pl)



**forum architecten & planer**



Roger Sevenheck  
CEO  
PUP Real Estate IV B.V.  
Mobile: 0031- 6111 64 072

-- DE REMBRANDT - VEGHEL

© Copyright, Tilburg

Dit ontwerp is economisch en creatief  
eigendom  
van Forum Architecten & Planners, beschermd  
onder Nederlands Recht.